



Before use the Optical Mark Reader SR-430

## Procedure for install the USB Driver

In order to use USB interface for SR-430, you first need to install\*<sup>1</sup> USB Driver. **Before you connect SR-430 and computer, you first need to install the USB Driver. The following are the procedures for installation.**

Without installing USB driver into your computer, you will not have any operation\*<sup>2</sup>.

(System Requirements)

OS : Windows\*<sup>3</sup> Vista/7/8/8.1/10

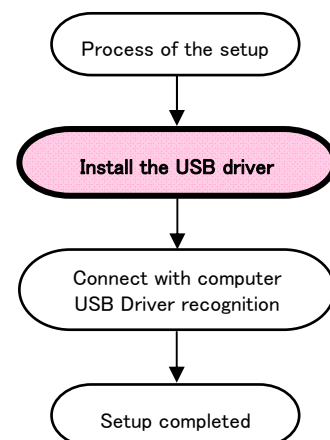
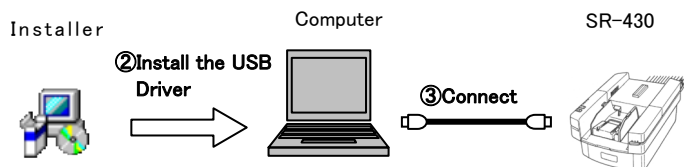
Computer : Computer equipped with USB interface as standard.

### Process of the setup

#### **[CAUTION]**

- Please close other application softwares. There is possibility of reactivating other application software during this installation.
- If in case you are using the Windows7 offline, please use the driver for Vista (Ver6.6.1.0).

- ① Please uncompress the downloaded file (ZIP compressed).
- ② (For 32bit OS) Click "English\Driver\sr430usbInstaller\_x86.exe" in the uncompress folder. (For 64bit OS) Click "English\Driver\sr430usbInstaller\_x64.exe" in the uncompress folder. The Installer is displayed some messages, then, please refer and proceed installation. In case of you installed incorrect driver, please un-install it from computer. After finished, please try to install correct USB driver to the computer.  
\* (For Windows Vista) Click "English\Driver\Old\sr430usbInstaller\_x64.exe"(for 64bit OS)
- ③ Turn on SR-430 and connect with computer, The USB driver can be automatically recognized for Windows



\*<sup>1</sup> This installing is needed to log-in as "administrator ". Internet connection required for digital signature authentication

\*<sup>2</sup> In case SR-430 connected with PC before install the USB driver, or SR-430 cannot find well by the "device manager" on Windows PC, then please un-connect SR-430 with PC, and uninstall the USB driver, then reinstall USB driver again.

\*<sup>3</sup> Windows is registered trademarks of Microsoft Corporation (U.S.A.) in the United States and other countries.

## Process of the update

### 【CAUTION】

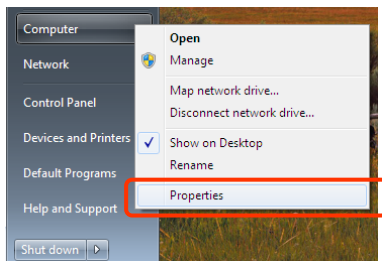
- When you do not correspond to OS which your driver used, please update to the driver of the latest version \*4.

\*4 The latest version is 6.7.3(As of 2016/06/30).

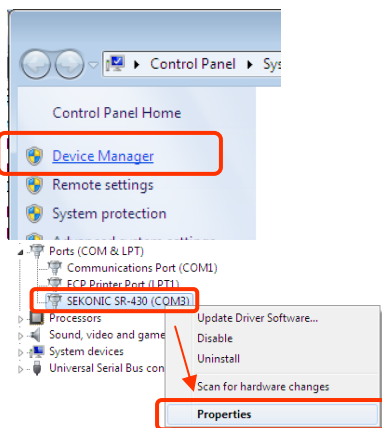
- Please uncompress the downloaded file (ZIP compressed).
- (For 32bit OS) Click "English\Driver\sr430usbInstaller\_x86.exe" in the uncompressed folder.  
(For 64bit OS) Click "English\Driver\sr430usbInstaller\_x64.exe" in the uncompressed folder.

The Installer is displayed some messages, then, please refer and proceed installation.

### How to confirm the version number

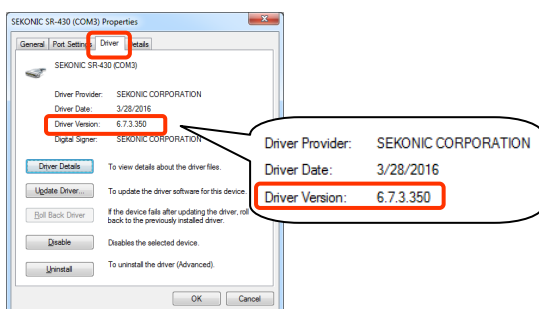


- Open the properties from start menu in the computer.  
(When you do the right click in the "start menu", you can confirm the "Properties" in the display).



- Select the "Device manager" in the menu.

- Click the "port", and find the "SEKONIC SR-430".  
Right click on the "SEKONIC SR-430",  
the "properties" is opened from the menu.



- Select "Driver" tab, and confirm the version.

## SEKONIC CORPORATION

7-24-14, Oizumi-Gakuen-cho, Nerima-ku,  
Tokyo, 178-8686, Japan  
TEL +81-3-3978-2325 FAX +81-3-3978-2353  
<http://english.sekonic.co.jp>