

**For Immediate Release**

## Sekonic LITEMASTER PRO L-478DR/D *World's First<sup>\*1</sup> Touch Screen Photo / Cine Meters*

Nerima-Ku, Japan, September 17, 2012 - Sekonic Corporation, manufacturers of Professional Photographic Light Meters, announced today the release of the New LITEMASTER PRO L-478 series, world's first<sup>\*1</sup> touch-screen operated light meters with unique features for both still and motion imagers. The L-478DR incorporates PocketWizard<sup>®</sup> wireless technology for in-meter power control of select studio flashes connected to PocketWizard<sup>®</sup> ControlTL<sup>®</sup> receivers as well as standard triggering with the entire PocketWizard<sup>®</sup> wireless family. Both use Sekonic's breakthrough DTS (Data Transfer Software) system that automates meter calibration to the camera in use and expanded Cine features put these meters in a class of their own.

*\*1 As of August 2012 by research of Sekonic Corporation*

The Sekonic LITEMASTER PRO's compact size is both instantly familiar and comfortable to use. The large color LCD (2.7") displays ambient, flash, cine and other information in a clear and understandable way. Settings are made by simply touching or sliding a finger over the screen.



**L-478DR      L-478D  
LITEMASTER PRO**

### **Flash Power Control with L-478DR**

PocketWizard<sup>®</sup> wireless technology enables fingertip control of remote flashes connected to ST4 or MC2 ControlTL receivers and Nikon and Canon Speedlights connected to Flex TT5 transceiver. Offered in both FCC (USA) and CE (Europe) frequencies, The LITEMASTER PRO L-478DR will support all ControlTL<sup>®</sup> Channels and Zones (A, B, C).

Power levels are controlled by touching or moving your finger over the L-478DR screen. ControlTL<sup>®</sup> Zones, marked A, B, C, allow switching remote flashes ON and OFF at the meter to make separate measurements for easy adjustment of lighting ratios. Standard Channel and Quad Zone capability allow triggering all standard PocketWizard<sup>®</sup> radios and flash units incorporating PocketWizard<sup>®</sup> radio receivers. To learn more about PocketWizard<sup>®</sup>, please visit them at [www.pocketwizard.com](http://www.pocketwizard.com).



**Power Control Screen  
(L-478DR only)**



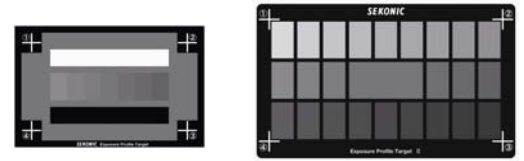
**PocketWizard<sup>®</sup>  
Flex TT5**



**PocketWizard<sup>®</sup>  
PLUS III**

### Exposure Profiling

Sekonic's pioneering DTS (Data Transfer Software) Version 3.0, introduced earlier this year, enables quick dynamic range mapping of both digital still and motion cameras for the most precise control of light and exposure. The automated process requires using the L-478's 5-degree viewfinder and recording images of one of Sekonic's [Exposure Profile Targets](#) or one of [ColorChecker®](#) series targets by X-Rite®, all available as a separate purchase. Measured data from industry-standard targets can also be manually entered in the software or meter. Up to ten camera profiles can be stored in the meter. Any number of profiles can be stored with the software. Once loaded, the Sekonic L-478 series can make incident and reflected light readings that are precisely tuned to the dynamic range of the profiled camera. A wide range of in-meter adjustment as well as complete exposure data input is also possible using the graphic interface of the L-478 series.



**Sekonic  
Exposure Profile Target & Target II**



**X-rite®  
ColorChecker®  
Targets**



**Exposure Profiling**

### Unique HD Cine / Cine/ Light Measuring Features

Today's DV cameras are boundless. The L-478 series meters have two motion-capture modes to fit the shooting needs of every cinematographer. Simply touch the screen to set shutter speeds for HD SLR cameras or quickly select frame rates and shutter angles for Cine shooting. They also allow users to create unique frame rates and shutter angles for special effects. Sekonic designers added a unique filter mode that enables getting exact light levels with the filtered light sources used in motion picture production. Simply touch the L-478 series to instantly call up light source or camera filtration expressed industry standard CTO/CTB/ND terms. Or users can create filter factors and names for precise control illumination and exposure. Extended ISO to 409,600 and brightness measurement in Lux/FC and Cd/m<sup>2</sup>/FL<sup>-2</sup> will make the L-478 a major player on movie sets around the world.

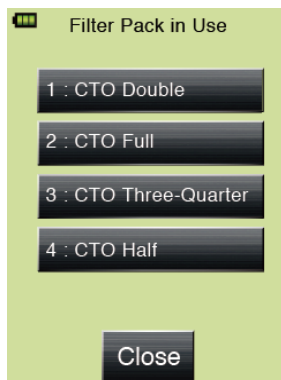
\*2: Cd/m<sup>2</sup>/FL measurements can be made by L-478VF, 5-degree viewfinder (separate purchase)



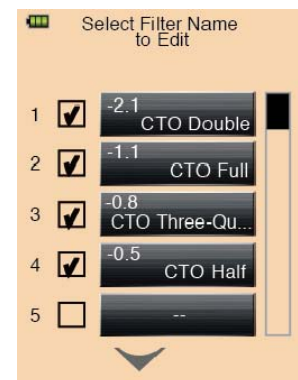
**CINE Mode**



**HD CINE Mode**



**Filter Pack in Use  
Screen**



**Filter Edit Screen**

### Power and Accessories

The L-478-series meters are powered by two AAA-size batteries. The L-478 series meters come standard with two AAA batteries, case, strap, user- applied anti-glare film and Quick Guide. A five-degree viewfinder is available as a separate purchase for reflected light readings and calibration and measurement using camera profiles made with the Sekonic DTS system.

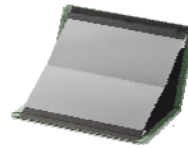
Also a five-meter-long synchro cord and 18% gray card are available as separate purchase accessories



Two AAA Batteries



L-478VF  
5-Degree Viewfinder



18% Gray Card



Synchro Cord

### Specifications

Type	Digital light meter for flash and ambient light		
Light receptor	Incident light	Lumisphere convertible to flat diffuser (with retracted lumisphere)	
	Reflected light	5-degree spot metering with optional viewfinder	
Measuring mode	Ambient light	Aperture priority, Shutter speed priority, TF priority, CINE, HD Cine, Illuminance(lx/fc), Luminance(cd/m <sup>2</sup> /f)	
	Flash light	Cord (PC), Cordless, Radio triggering (L-478DR only) (with/without multiple cumulative)	
Measuring range (ISO100)	Ambient light	Incident light: EV-2 to EV22.9	Reflected light: EV3.0 to EV22.9
	Illuminance	0.63 to 2,000,000 lx	0.1 to 180,000 fc
	Luminance	1.0 to 980,000 cd/m <sup>2</sup>	0.29 to 290,000 fi
	Flash light	Incident light: F1.0 to F128.9	Reflected light: F2.8 to F128.9
Display range	ISO	ISO 3 to 409,600 ( in 1/3 steps )	
	Shutter speed	Ambient light	30 min. to 1/64,000 sec. plus 1/200, 1/400 sec. (in 1, 1/2 and 1/3 steps)
		Flash light	30 min. to 1/1,000 sec. plus 1/75, 1/80, 1/90, 1/100, 1/200, 1/400 sec. (in 1, 1/2 and 1/3 steps)
	Aperture	F0.5 to F161.2 ( in 1, 1/2 and 1/3 steps )	
	Frame rate	1 to 1,000 f/s, other possible settings: 20 types	
	Shutter angle	1° to 358°, other possible settings: 20 types	
	EV value	EV-27.9 to EV55.8 ( only effective with Ambient Light )	
	Other functions	Exposure profile, Mid.Tone function, Exposure compensation, Filter compensation, Flash analyzing function, Multiple cumulative function, Memory/clear/recall function, Average function, Contrast function, Custom setting function, Auto power OFF function, Touch panel lock function, Firmware upgrade, Frame rate/Shutter angle edit function, Battery	
Battery used	AAA batteries 1.5Vx2 (alkaline, manganese, lithium, nickel hydride, or nickel based)		
Operating temperature range	- 10°C to 50°C ( no condensation )		
Storage temperature range	- 20°C to 60°C ( no condensation )		
Dimensions	Approx 57 ( W ) × 140 ( H ) × 26 ( D ) mm ( excluding protrusions )		
Weight	Approx 130g ( L-478D without batteries ) , 140g ( L-478DR without batteries )		
Standard accompanying accessories	Soft case, Strap, 2 AAA dry cell batteries, Start-up guide, CD-ROM (Operating Manual and Data Transfer Software)		
Optional accessories	5 degree viewfinder, Exposure profile target II, Exposure profile target, Gray card, Synchro		

Features and specifications are subject to change without notice

To learn more about the history of Sekonic or their extensive line of professional light measuring instruments, visit them at [www.sekonic.com](http://www.sekonic.com).